



GAT MONTHLY MEMBERSHIP PROGRESS REPORT

Results as of: 5/31/2024

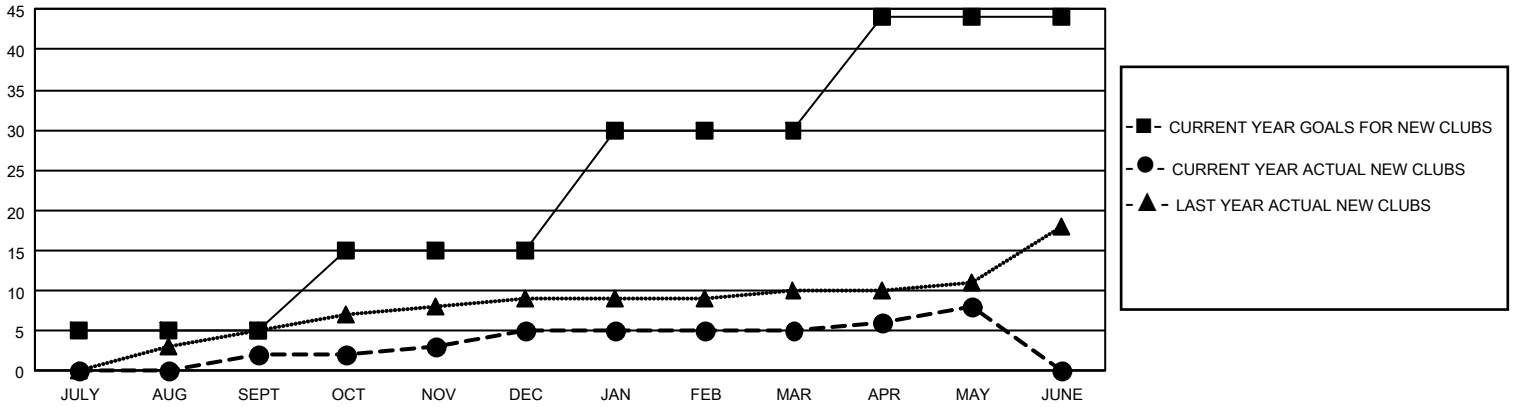
GMT Constitutional Area 1, Group H

REPORT DOES NOT INCLUDE CLUBS IN UNDISTRICTED AREAS.

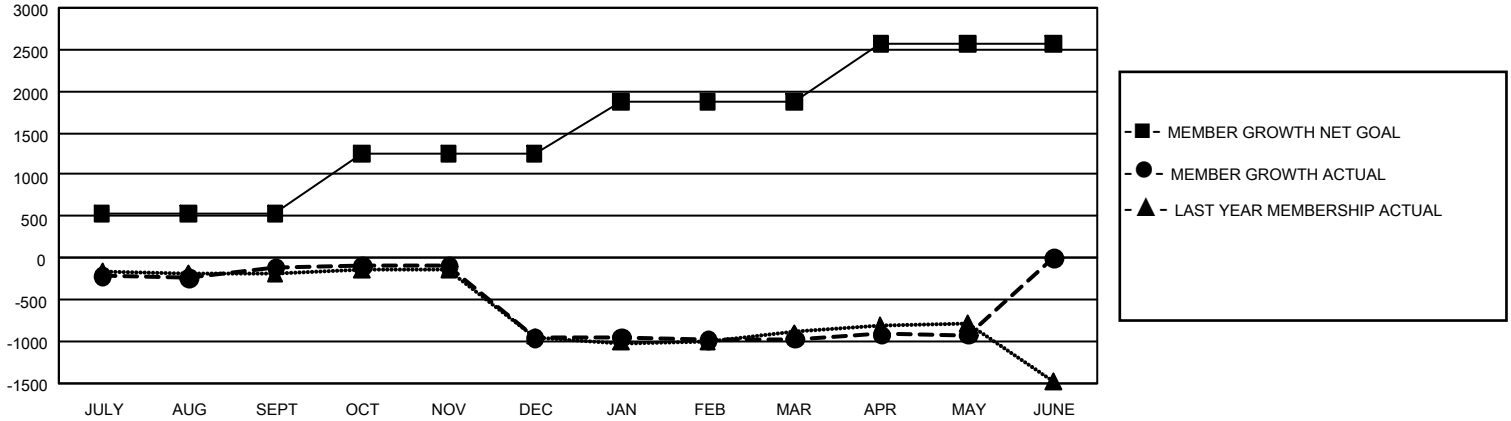
Clubs			
RESULTS FOR 2023-2024			
QUARTER	NEW CLUB GOAL	NEW CLUBS	DROPPED CLUBS
JULY/AUG/SEPT	15	2	15
OCT/NOV/DEC	30	3	23
JAN/FEB/MAR	45	0	6
APR/MAY/JUNE	42	3	1

Members			
RESULTS FOR 2023-2024			
QUARTER	MEMBER GROWTH NET GOAL	MEMBER GROWTH ACTUAL	DROPPED MEMBERS ACTUAL (including transfers)
JULY/AUG/SEPT	534	1,094	1,024
OCT/NOV/DEC	720	966	1,629
JAN/FEB/MAR	625	1,054	886
APR/MAY/JUNE	688	661	561

GOALS AND ACTUAL NEW CLUBS CUMULATIVE



GOALS AND ACTUAL MEMBERS CUMULATIVE



DROPPED CLUBS: 44	786 CLUBS OF 1,362 ADDED 1 OR MORE NEW MEMBERS	<u>GENDER DISTRIBUTION</u>	
		MALE 17,819 (57.31%)	FEMALE 13,266 (42.67%)
<u>DROPPED MEMBERS</u>		NON BINARY 1 (0.00%)	PREFER NOT TO ANSWER 6 (0.02%)
DECEASED 483	CLICK HERE FOR CUMULATIVE MEMBERSHIP DATA	TOTAL FAMILY UNIT MEMBERS 5,971	
CLUB CANCELLED 388		FAMILY MEMBERS PAYING HALF DUES 3,073	
OTHER 3,223			
TOTAL 4,094			